



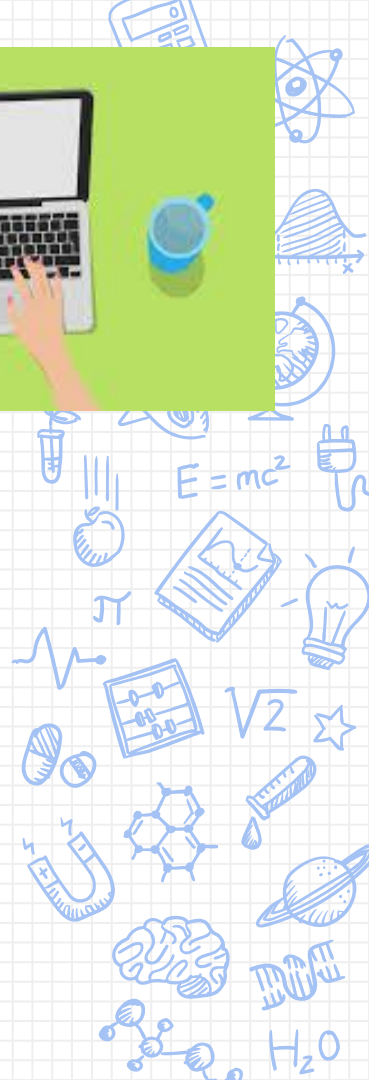
# Welcome!

Capital City High School  
2024–2025 ENROLLMENT

-

# Enrollment Documents

- ✕ Google Classroom-  
Class of 2026:  
5wspulq
- ✕ Academic Planning  
Guide
- ✕ Course List





Please log-in using your Infinite Campus  
username and password

# Academic Plan

jeffersoncitymo.infinitecampus.org/campus/nav-wrapper/student/portal/student/academicPlan

student.jcschools.us bookmarks edpuzzle homework volleyball film library books infinite campus verb conjugations jbrgjsnklinsfvklst

**Academic Plan**

**Warning:** We've detected you are accessing this page with a mobile device or a low display resolution. We highly recommend accessing this tool using a computer.

Choose an Academic Plan:

Graduation Requirements for the Class of 2023 and later

Post Grad Location  Post Grad Plans

**Proceed**

Today

Calendar

Assignments

Grades

Grade Book Updates

Attendance

Schedule

**Academic Plan**

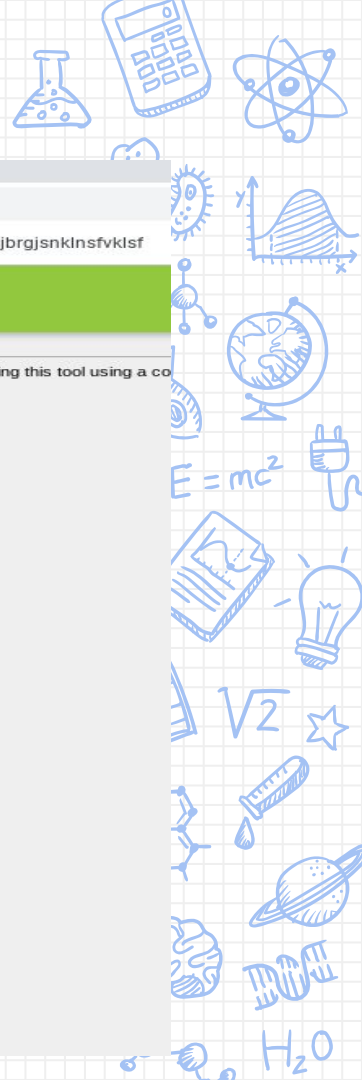
Fees

Reports

Message Center

Discussions

More



# Academic Plan



Programs Progress **Course Plan** HS Academics ICAP Survey

Save Course Plan Report Documents

Program: Graduation Plan (2023 and later) Counselor: Jaime Marshall, Mike Shipp [jaime\\_marshall@jcschools.us](mailto:jaime_marshall@jcschools.us)

☐ Approved by parent/legal guardian

Grade: 09 7.0 / 7.0

Grade: 10 0.0 / 7.0

Grade: 11 0.0 / 7.0

Grade: 12 0.0 / 4.0

## Language Arts (1.0 / 4.0)

1.0 / 1.0

0.0 / 1.0

0.0 / 1.0

0.0 / 1.0

1111INS1 English I - 0.5

Type to search or select courses

Type to search or select courses

Type to search or select courses

1111INS2 English I - 0.5

**ALERT:** Not enough credits selected in Language Arts to meet the minimum plan requirements.

## Mathematics (1.0 / 3.0)

1.0 / 1.0

0.0 / 1.0

0.0 / 1.0

0.0 / 0.0

3121S1 Algebra IA - 0.5

Type to search or select courses

Type to search or select courses

Type to search or select courses

3121S2 Algebra IA - 0.5

**ALERT:** Not enough credits selected in Mathematics to meet the minimum plan requirements.

## Science (1.0 / 3.0)

1.0 / 1.0

0.0 / 1.0

0.0 / 1.0

0.0 / 0.0

4125S1 Physical Science - 0.5

Type to search or select courses

Type to search or select courses

Type to search or select courses

4125S2 Physical Science - 0.5

**ALERT:** Not enough credits selected in Science to meet the minimum plan requirements.

## Social Studies (1.0 / 3.0)

1.0 / 1.0

0.0 / 1.0

0.0 / 1.0

0.0 / 0.0

2200INS1 World History - 0.5

Type to search or select courses

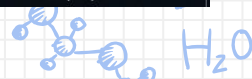
Type to search or select courses

Type to search or select courses

2200INS2 World History - 0.5



2:24 PM  
1/23/2020



# Academic Plan



Programs

Progress

Course Plan

HS Academies

ICAP Survey

Save

Course Plan Report

Documents

☐ Program: Graduation Plan (2023 and later)

Counselor: Jaime Marshall, Mike Shipp [jaime.marshall@jcschools.us](mailto:jaime.marshall@jcschools.us)

☐ Approved by parent/legal guardian

Grade: 09 7.0 / 7.0

Grade: 10 0.0 / 7.0

Grade: 11 0.0 / 7.0

Grade: 12 0.0 / 4.0

ALERT: Not enough credits selected in Personal Finance to meet the minimum plan requirements.

ALERT: Course Requirement not met: Personal Finance

Practical Art (0.5 / 0.5)

0.5 / 0.5

7331 Child Development - 0.5

0.0 / 0.0

Type to search or select courses

0.0 / 0.0

Type to search or select courses

0.0 / 0.0

Type to search or select courses

Elective (1.0 / 8.5)

1.0 / 1.0

5585S1 Cavalier Time - 0.5

5585S2 Cavalier Time - 0.5

0.0 / 2.0

Type to search or select courses

0.0 / 2.5

Type to search or select courses

0.0 / 3.0

Type to search or select courses

ALERT: Not enough credits selected in Elective to meet the minimum plan requirements.

Non-credit

Type to search or select courses

Type to search or select courses

Type to search or select courses

Alternates

0.0 / 2.0

Type to search or select courses

0.0 / 0.0

Type to search or select courses

0.0 / 0.0

Type to search or select courses

ALERT: Not enough credits selected in Alternates for grade 10 to meet the minimum plan requirements.



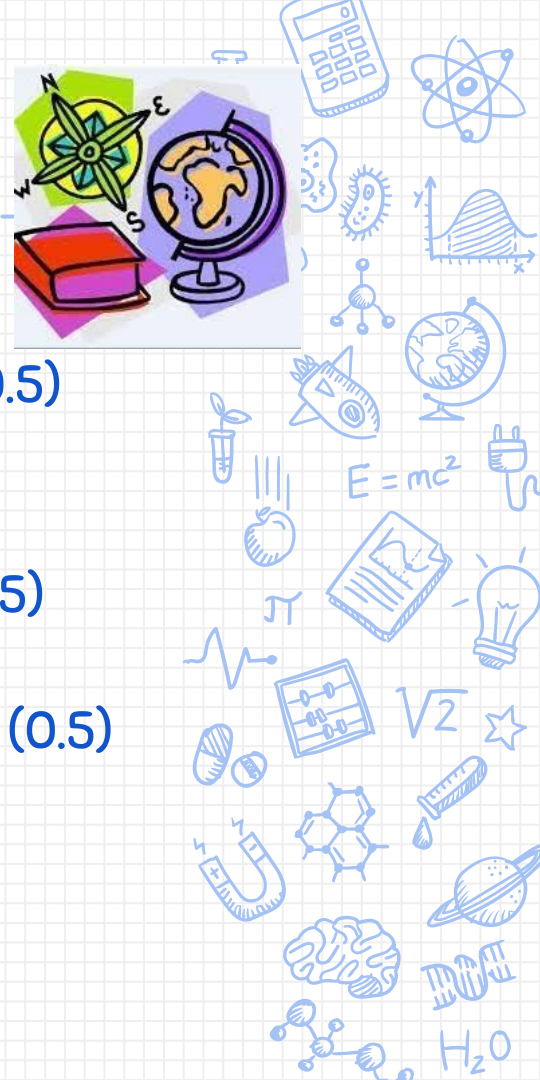
2:28 PM  
1/23/2020







# English (4.0)



- ✗ English IV (1.0)
- ✗ English 101 (0.5)
- ✗ English 102 (0.5)
- ✗ AP English Lit (1.0)
- ✗ AP Eng Language and Composition (1.0)
- ✗ College Prep Lit (1.0)
- ✗ Journal Writing (0.5)
- ✗ Speech I (0.5)
- ✗ Debate I (0.5)
- ✗ African Am. Lit (0.5)
- ✗ 21st Century Communications (0.5)
- ✗ Child/YA Lit (0.5)

# Social Studies (3.0)

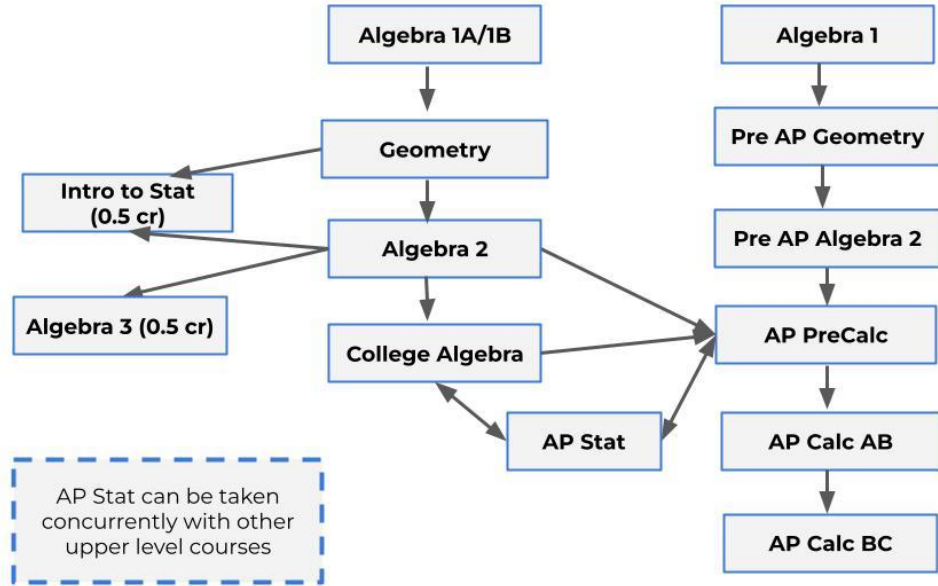
---

- ✗ AP Human Geography (1.0)
- ✗ AP Microeconomics (1.0)
- ✗ AP Psychology (1.0)
- ✗ Psychology (0.5)
- ✗ Sociology (0.5)
- ✗ Middle East (0.5)
- ✗ American Civil War (0.5)
- ✗ Geog of Asia/Africa/Aus (0.5)
- ✗ AP US History (1.0)
- ✗ AP World History (1.0)
- ✗ AP European History (1.0)



# Math (3.0)

- ✗ Geometry (1.0)
- ✗ Algebra II (1.0)
- ✗ Pre AP Algebra II (1.0)
- ✗ Intro to Statistics (0.5)
- ✗ Algebra III (0.5)
- ✗ AP Pre-Calculus (1.0)
- ✗ AP Statistics (1.0)
- ✗ AP Calc AB (1.0)
- ✗ AP Calc BC (1.0)
- ✗ Business Math (1.0)



Talk to your teacher!

- ## Additional Options
- ✗ PLTW Principles of Biomedical Science (1.0)
  - ✗ PLTW Human Body Systems (1.0)
  - ✗ PLTW Medical Interventions (1.0)
  - ✗ PLTW Biomedical Innovations (1.0)

# Electives

---

## Team Sports Officiating

- ✗ Not required

## Personal Finance (0.5)

- ✗ Personal Finance OR

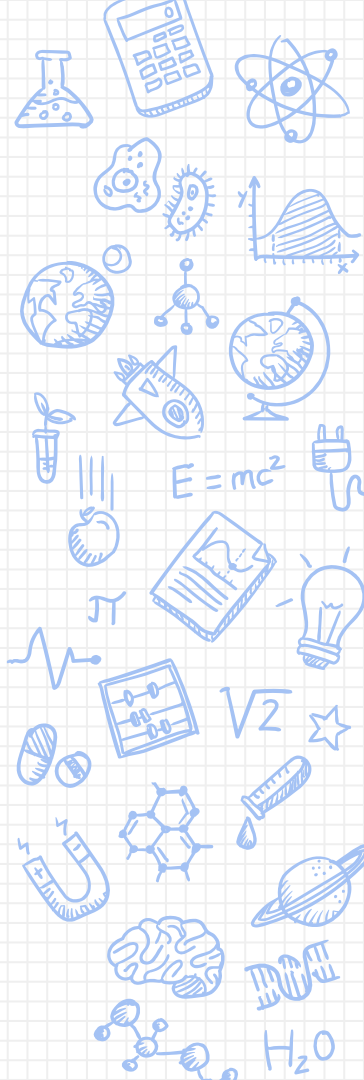
- ✗ Required for graduation
- ✗ Practical Art

## Production

- ✗ Newspaper (1.0)
- ✗ Yearbook (1.0)

## Flex/Career/Market Work

- ✗ Earn credit for working
- ✗ Application/Approval required
- ✗ See counseling office



# Physical Education and Health

## Physical Education (1.0 credit required to graduate)

- ✗ Boys PE (0.5)
- ✗ Girls PE (0.5)
- ✗ Walking/Jogging (0.5)
- ✗ Body Conditioning (0.5)
- ✗ Ath. Advanced Strength Training (1.0)
  - ✗ Recommended for those playing a school sport

## Health

- ✗ Health (GRAD REQUIREMENT, 0.5)
- ✗ Athletic Training (0.5)



# Music Classes (Fine Art)

---

## Band

- ✗ Marching Band (0.5) – before school (total 7.5)
- ✗ Concert Band (1.0)
- ✗ Jazz Band (1.0) – before school (total 8.5)

## Choir

- ✗ Concert Choir (1.0) – Bass
- ✗ Bella Voce (1.0) – Treble
- ✗ Chorale (1.0) – audition only

## Orchestra

- ✗ Concert Orchestra (1.0)
- ✗ Symphonic Orchestra (1.0) – audition only



[illegible]

- 16



# World Languages

# Foreign Language

- ✗ French (1.0)
- ✗ Spanish (1.0)





# Family and Consumer Sciences

-



# Practical Arts– Misc

---

- ✗ PLTW Intro to Engineering Design (1.0)
- ✗ PLTW Principles of Engineering (1.0)
- ✗ PLTW Civil Engineering and Architecture (1.0)
- ✗ PLTW Engineering Design & Development (1.0)
- ✗ Woodworking I (0.5)
- ✗ Woodworking II (0.5)
- ✗ Electricity (0.5)
- ✗ Metals Tech I (0.5)
- ✗ Metals Tech II (0.5)
- ✗ Drivers Ed– S1 or S2 (0.5)
- ✗ Must be 15 before Drivers Ed starts



# Practical Arts– Agriculture

---

- ✕ Intro to Agriculture 1.0
- ✕ Ag Business 1.0
- ✕ Floral Design 0.5
- ✕ Conserv of Nat Resource 0.5
- ✕ Adv Animal Science 0.5
- ✕ Food Science 0.5
- ✕ Landscaping/Turf Mgmt 0.5
- ✕ SAE Coop 0.5/1.0



# A+ Tutoring



- ✗ A+ Tutoring
  - ✗ Completed at CCHS during the day

Students must do tutoring to qualify for A+



# Part Time

---

- ✗ Students who want to do less than 7 classes must fill out a part time form
- ✗ Parent signature required
- ✗ Students who participate in MSHSAA activities must do 6/7 minimum



# Alternates

---

- ✗ What are your next favorite classes if you aren't able to get the ones you picked!!
- ✗ Please list 2 or more alternate courses at the bottom course plan.
- ✗ Courses Choices are due February 17th!





# State of Missouri Graduation Requirements

4 units of English

3 units of Math

3 units of Social Studies

3 units of Science

.5 units of Health


.5 Personal Finance

1 unit of PE

1 unit of Fine Arts

1 unit of Practical Art



A decorative border of various science and math icons surrounds the central text. In the top left, there is a molecular model, a globe, a beaker with a chemical reaction, and the formula  $H_2O$ . In the top right, there is a calculator, a hexagonal molecule, a globe, a plug, a cell, a book, a magnet, a star, and a test tube. In the bottom left, there is a lightbulb, a brain, a molecular model, a graph, a beaker, and the formula  $E=mc^2$ . In the bottom right, there is a magnet, a hexagonal molecule, a globe, a planet, a DNA helix, a star, a molecular model, and the formula  $H_2O$ .

# 25

---

Credits Needed to Graduate

-

# Important Links

---

Capital City Counseling webpage:  
<https://www.jcschools.us/domain/3988>

Follow us on Twitter:  
[@CCHSCavsCounsel](https://twitter.com/CCHSCavsCounsel)

## Contact Information

Mrs. Marshall

Mrs. Lorenz

Mr. Ritter

Mrs. Schaefer

Mrs Wilkins

573.659.2388

